

COMMUNITY CONSOLIDATED SCHOOL DISTRICT

Learning for Life

89

update

www.ccsd89.org

A PUBLICATION OF DISTRICT 89
SERVING GLEN ELLYN, LOMBARD AND WHEATON

District 89 Students Return to School on August 25

The arrival of a new school year brings an abundant element of excitement and anticipation for children and families. When students return to classrooms on August 25, a caring and motivated District 89 staff eager to build on last year's many successes will greet them. While most District 89 community members do not have children in our schools, your support and interest in maintaining a vibrant and excellent school system is paramount.

District 89 residents can be proud of several accomplishments:

- Achievement is high with student performance on the Measurement of Academic Progress (MAP) placing District 89 in the top 10% nationally
- 96% of District 89 students are high school ready with their performance on the EXPLORE assessment
- Class size remains small with averages between 18-25
- The District maintains 198 days cash on hand with reserves of more than six months
- 82% of District 89 teachers hold a Master's degree or higher
- District 89 received grant funding for several important projects: \$9,000 in Illinois Library Grants, \$48,000 in School Safety Grants, \$37,500 in a School Maintenance Grant, and \$25,000 for the People's Music Grant

This information and more is part of the District's Strategic Plan

scorecard published on our website. During the coming school year, District 89 will be working on the following initiatives:

- Embedding student growth measures into professional staff evaluation
- Transitioning to the new student assessment – Partnership for Assessment of Readiness for College and Career (PARCC)
- Extending efforts to improve student writing
- Studying school time for learning and extended time for kindergarten, including full day programming
- Maintaining educational quality with balance in financial support

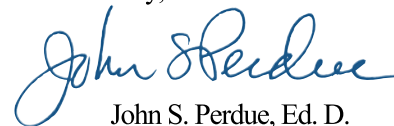
Enrollment data shows a slight decrease in student population, drifting over the last few years. The district ended the 2013-2014 school year with 1,895 students. With this enrollment trend, the District rebalances enrollment with staffing levels, affording opportunities for savings and to explore needed programming. Contributing factors for new learning

supports include 20% of the student population qualifying for Free or Reduced Lunch combined with increased early learning expectations.

The mission of our school system is to empower all learners to recognize and optimize their full potential. Because a solid home-school relationship is a key ingredient to student success, parents and community blend to support this mission. Whether a resident, a neighbor or a retired citizen, your role in helping to guide students for successful futures is a value added and welcomed community contribution in our schools.

The teachers and administrators value your comments and suggestions to advance "*Learning for Life*" in District 89. Thank you for your support.

Sincerely,



John S. Perdue, Ed. D.
Superintendent

Inside this issue:

District 89 Students Return to School on August 25	1
District 89 Curriculum Nights.....	1
Schools Benefit from Thorough Assessment of Building Systems.....	2
Have you Activated your Website Parent Account?	2
District 89 Families Invited to Attend Free Seminars	2
Transitioning from District 89 to Glenbard South: Preparing Students for High School Success.....	3
MAP Scores Place District 89 Students in Top Percentiles for Academics.....	3
Parents and Students Invited to Internet Safety Program on October 8 ...	4
School Election Procedures	4

District 89 Curriculum Nights

All parents are encouraged to attend the curriculum night for their child's or children's school.

Glen Crest	Thursday, August 28, 6:15PM GL8 - Aspire Test Mtg.; 7:00PM GL6, GL7 & GL8
Briar Glen	Thursday, September 4, 6:30PM
Westfield	Thursday, September 4, 7:00PM
Arbor View	Thursday, September 11, 7:00PM
Park View	Thursday, September 11, 6:30 PM

FALL 2014

Schools Benefit from Thorough Assessment of Building Systems

District 89 works with the Illinois Consortium for Educational Change (CEC) to facilitate ongoing improvements to student learning and achievement. Over the last two years, all four District 89 elementary schools have participated in the CEC's Building System Assessment review. This lengthy and multi-faceted process is intended to help schools identify strengths and opportunities for improvement within a continuous improvement framework.

Earlier this year, Arbor View and Briar Glen Elementary Schools participated in the Building System Assessment program. The 3 ½ month process began with an internal self-study, where members of the school improve-

ment teams used CEC rubrics to gauge their effectiveness in the areas of learning, collaboration and results. Once the school improvement teams finished with the initial self-studies, the reports were shared with other building staff so additional feedback and input could be obtained.

The second phase of the assessment involved a review of the self-study by the external team, consisting of education professionals from the CEC and from other school districts. The team spent three days at each school conducting interviews and doing their own research into the schools' efficiencies in the target areas. Once the site visits were completed, external reports were created.

The results from the Arbor View and Briar Glen assessments were very positive, with a long list of items to be celebrated in the three target areas of learning, collaboration and results:

Learning

- Strong presence of the Common Core State Standards
- Assessments are being used to make instructional decisions
- Strong support personnel (Response to Intervention, Challenge, etc.)
- Standards-based grading is being implemented
- Conditions for learning are high

Collaboration

- There is pride in being a member of both schools
- The district strategic plan provides a guide for the "big picture"
- School and grade level team goals are aligned to the district goals
- Schools embrace a trusting, collaborative and respectful culture
- There are processes in place for shared decision-making
- Parents feel welcomed at the school and are highly satisfied

Results

- Grade level SMART goals are developed
- The district holds a data retreat annually
- Student achievement results are high
- Resources are maximized

The process also identified areas where opportunities for improvement and growth exist, and those suggestions will be brought back to school improvement teams, where they will be discussed and incorporated into future school improvement plans. "It was a very worthwhile experience," said Briar Glen Principal Mitch Dubin-

sky. "I look forward to utilizing the CEC's feedback in order to make Briar Glen the very best learning environment for all children."

Westfield and Park View Elementary Schools participated in the assessment program in 2013, and Glen Crest Middle School is preparing for a system assessment that will take place in 2015.

Have you Activated your Website Parent Account?

Earlier this year, District 89 launched a new website for students and families. While general information is still available at www.ccsd89.org, parents are encouraged to activate a personal account that will allow for a customized view of information specific to your child(ren). Please contact your child's school today to receive your access code and simple instructions for how you can improve your access to information that directly relates to your child(ren).

District 89 Families Invited to Attend Free Seminars



Each year, the Glenbard Parent Series (GPS) hosts a series of informative sessions to facilitate real-world parenting skills that enhance teens' social and emotional development, encourage responsible decision-making and promote respect-based relationships that help keep adolescents safe. These free seminars are open to all parents and students in the Glenbard feeder system, and District 89 parents are encouraged to attend those sessions they feel would be beneficial. Just a few of this year's topics include *The Science of Successful Learning*, *How to Raise Responsible and Confident Teens*, and *Dealing with Stress, Tests, and Academic Pressures*. Some sessions require advanced registration, and additional information about all programs can be found at www.glenbardgps.org.

Transitioning from District 89 to Glenbard South: Preparing Students for High School Success

District 89 students have a long history of performing very well at Glenbard South High School (GBS). This success is largely due to a supportive and collaborative relationship that exists between District 89 and staff from GBS, the school to which our eighth grade students matriculate.

A comprehensive approach is used to ensure optimal success for students transitioning to high school. Faculty from both school districts meet regularly to discuss course alignment, social and emotional transition needs and to ensure students possess the technology skills to thrive in high school. The Glen Crest and GBS principals meet frequently to discuss these and other transitional issues.



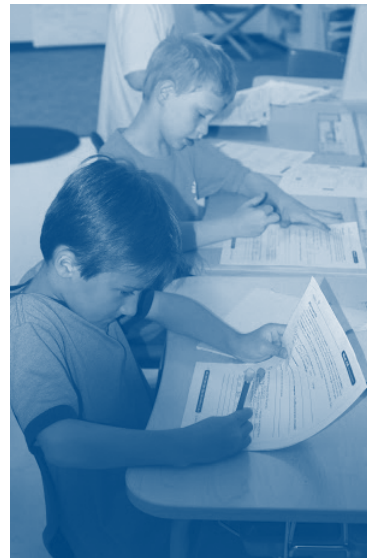
Department chairs from Glen Crest Middle School and GBS work together to align curriculum so content gaps can be avoided and rigorous learning expectations are consistent. Faculty members from the two districts are involved with transition planning. Students' needs are discussed and care is taken to provide the best plan for maximized student success. Efforts to further ease the transition take place each spring when 8th graders visit the high school.

Efforts to promote a smooth transition from middle school to high school allow students to continue to grow academically. It is worth noting that GBS has the highest average ACT score of 23.2 among the four Glenbard high schools.

MAP Scores Place District 89 Students in Top Percentiles for Academics

When students take the Measurement of Academic Progress (MAP) assessments, results are reported through RIT scores. The RIT Scale is a curriculum scale that uses individual item difficulty values to estimate student achievement. District 89 is especially pleased with end of the year MAP data that suggests D89 performs in the top 10% of schools from across the country.

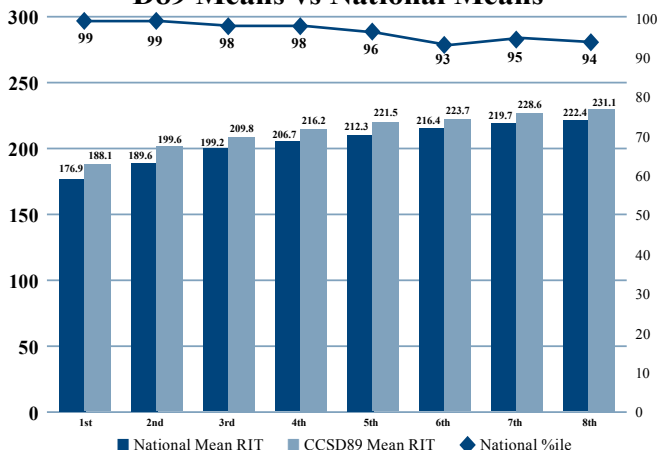
As the graphs below illustrate, the District 89 average performance is well above the national average. District 89's



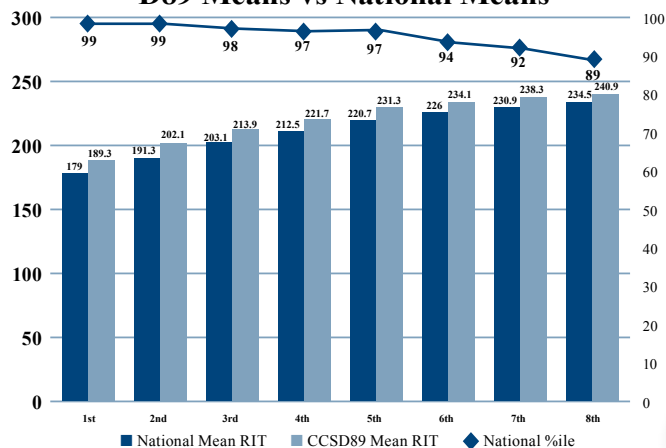
mean score for each grade level is about a year above the national mean. These scores are a direct reflection of the implementation of the Common Core State Standards, which are more rigorous than the previous standards and promote critical thinking skills. In addition, the District 89 staff has worked collaboratively to implement instructional practices to increase engagement among students. District 89 students are responding very well to the

revised standards and classroom strategies, and are making great strides toward college and career readiness.

**Average MAP RIT Scores - Reading
D89 Means vs National Means**



**Average MAP RIT Scores - Mathematics
D89 Means vs National Means**



Parents and Students Invited to Internet Safety Program on October 8

Students spend a great deal of time on mobile communication devices and the Internet. They have embraced new technologies such as text messaging, social networking sites, and digital cameras to share information and connect with friends. However, without proper guidance, these types of communication technologies can be dangerous to a child's physical and psychological well-being.

Cyberbullying, bullying that occurs through electronic technology, takes place through text messages, emails, or posts of messages, pho-

tos, or videos on social media sites. It is associated with many of the same negative effects as other types of bullying, including poor self-esteem, substance use, lowered school attendance and grades, and mental health problems. According to the National Center for Education statistics, nationally, more than 25% of children ages 12-18 report having been cyberbullied during the last 12 months. Each District 89 school has a Cyberbullying hotline, where instances of bullying can be reported anonymously:

Arbor View Elementary School: (630) 984-5005

Briar Glen Elementary School: (630) 984-4214

Park View Elementary School: (630) 984-6442

Westfield Elementary School: (630) 984-4543

Glen Crest Middle School: (630) 984-4549

To help inform parents about potential dangers associated with these and other cyber technologies, District 89 is partnering with the Illinois Attorney General's Office to offer an Internet Safety Program at Glen Crest Middle School on October 8, 2014. The program will focus on strategies that help adults educate their child(ren) about responsible and safe online behavior. All families are encouraged to attend. Glen Crest is located at 725 Sheehan Avenue in Glen Ellyn.

School Election Procedures

Recent legislation changed school board election procedures for the April 7, 2015 consolidated election. Prospective school board candidates may obtain nominating petitions beginning in September at the DuPage County Election Commission, 421 North County Farm Road, Wheaton or on their website. Circulating nominating petitions for signatures begins Tuesday, September 23, with signed petitions being turned in to the DuPage County Election Commission between December 15 and December 22, 2014. Because of changes made in state law, school board candidate nomination papers are no longer filed with the local school district.

Postal Customer
ECSRWS

89
CONSOLIDATED
SCHOOL DISTRICT
COMMUNITY

www.ccsd89.org

Learning for Life

22W600 Butterfield Road

Glen Ellyn, IL 60137

630.469.8900

Non-Profit
Organization
U.S. Postage
PAID
Glen Ellyn, IL
Permit #145